



Infection Control Post COVID-19 Vaccination

JANET A. PHOENIX, MD, MPH, MS
CIDNEY A. ROBINSON, MPH



The Latest Variant B.1.617

- The Latest Covid-19 variant emerged from India and is called the Delta Variant
- Current vaccines show some effectiveness towards this variant but less than for the original virus and for other variants
- There is a new website where you can get answers to questions about vaccination and the latest recommendations for protecting ourselves
- Johns Hopkins University created a phone app with Q & As about Vaccines
- **Access the app here: [COVID-19 Vaccine Resource Hub](#)**

Tips for Communicating Mask Guidance in Your Community

Remember "MASK"

M Minimize risk by getting vaccinated

We're making progress in defeating COVID-19, but the virus remains a threat. Vaccination is the path to normalcy, and getting vaccinated is the best way to safely resume normal activities. The vaccines are safe and extremely effective at preventing people from getting sick and transmitting the virus to others.

A Anyone fully vaccinated can resume most normal activities

The vaccine is extremely effective at protecting people from contracting and spreading COVID-19. People who have been fully vaccinated can safely resume most activities without a mask. Exceptions: Everyone should continue to wear masks on public transportation and planes, and in health care settings, homeless shelters, and correctional facilities.

S Stay aware of local requirements

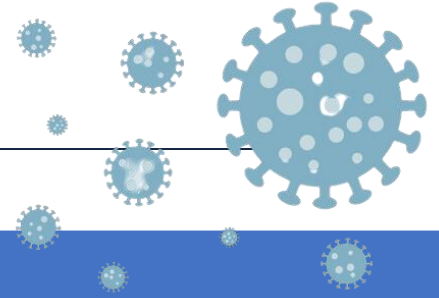
Everyone should continue to follow state and local laws, rules, and guidelines. Local transmission rates are important, and where infection rates are high, continuing to require mask-wearing in public can help protect everyone's health. Businesses may choose to require mask-wearing or vaccination, depending on the type and size of the company, local infection rates, and other factors.

K Keep taking precautions if you're unvaccinated

People who are not fully vaccinated should continue to take precautions including social distancing and wearing masks, especially indoors and in crowded areas, to protect themselves and others.



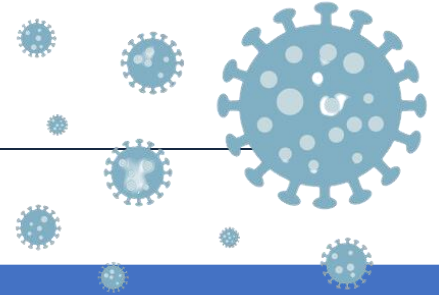
Reinfection with COVID-19



Is reinfection possible?

- Reinfection is known to occur with other human coronaviruses (HCoVs) ²
- The probability of SARS-CoV-2 reinfection is expected to increase with time after recovery from initial infection because of waning immunity and the possibility of exposure to virus variants.
- The risk of reinfection also depends on the likelihood of re-exposure to infectious cases of COVID-19. The fewer the cases the less likely it is that reinfections will occur.

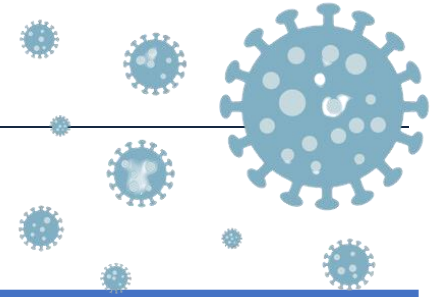
Reinfection with COVID-19



Is reinfection with COVID-19 possible?

- Cases of reinfection with COVID-19 have been reported, but they are rare.
- Currently, it is unknown if recovered adults are definitively immune to SARS-CoV-2 reinfection because biologic markers of immunity have not been correlated with protection from infection.

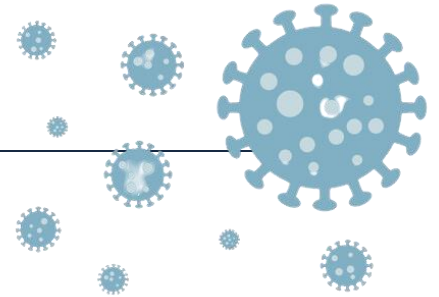
Reinfection with COVID-19



Is isolation required?

For most adults with COVID-19 illness, isolation and precautions can be discontinued **10 days *after symptom onset**** and after **resolution of fever for at least 24 hours, without the use of fever-reducing medications, and with improvement of other symptoms.**

Reinfection with COVID-19



Should the individual who tested positive be tested before returning to work? Should close contacts quarantine?

- No, provided you socially distance, wear masks and avoid close contact with others, crowds and wash your hands frequently.
- In congregate settings consider retesting people recovering from a confirmed infection and quarantining people exposed to someone who was infected with COVID-19.

Reinfection with COVID-19

SARS-CoV-2 Reinfection Case Investigation Form:

- https://www.cdc.gov/coronavirus/2019-ncov/downloads/php/CIP_ICR_508.pdf
- This form is designed to support common public health investigation into suspected SARS-CoV-2 reinfection cases.

Montgomery County COVID-19 Data

Positivity rate (14-day average as of 6/08/2021)

- .7 %
- Very low risk of transmission

7-day average number of new confirmed cases per 100K Residents (as of 6/08/2021)

- .9/100,000
- Very low risk of transmission

≡ District of Columbia & Prince George's County COVID-19 Data

**Positivity rate DC
(6/06/2021)**

2.1 %

**Positivity rate PG
County (6/08/2021)**

1.6 %

Montgomery County COVID-19 Data

Most businesses can operate at 75% capacity, for example:

- Arts and entertainment venues
- Hair and nail salons
- Recreation facilities
- Fitness centers
- Religious Facilities
- Restaurants and bars



Montgomery County COVID-19 Data

Gathering limits:

- Indoors: 250 people
- Outdoors: no limit, including sports and camps

Updated face covering guidance:

- Businesses can set their own rules on masking that are stricter than public health guidance.

Montgomery County COVID-19 Face Covering Guidance

Face Coverings must be worn

- On any public transportation or school bus
- Public Transportation
 - Shared ride services
 - MTA service
 - MARC
 - Light rail trains
 - MTA metro subway
 - Mobility and Paratransit

Montgomery County COVID-19 Face Covering Guidance

- Masks must be worn when you visit any health care facility.
- Indoors in a school.
- Indoors at childcare facilities and youth camps.



Montgomery County COVID-19 Face Covering Guidance for not fully Vaccinated Individuals

When indoors:

- In an area where members of the public are generally permitted.
- In an indoor work area where interaction with others is likely or where food is prepared.

Montgomery County COVID-19 Data

- Effective May 28, 2021, at 6 a.m. - Complete Reopening
- Board of Health Regulation expires
- No capacity limits
- Must continue to follow existing Maryland Guidelines in place





Choosing Safer Activities (Non- Healthcare)





	Unvaccinated People	Examples of Activities	Fully Vaccinated People
		Outdoor	
Safest		Walk, run, wheelchair roll, or bike outdoors with members of your household	
		Attend a small, outdoor gathering with fully vaccinated family and friends	
		Attend a small, outdoor gathering with fully vaccinated and unvaccinated people	
Less Safe		Dine at an outdoor restaurant with friends from multiple households	
Least Safe		Attend a crowded, outdoor event, like a live performance, parade, or sports event	
		Indoor	
Less Safe		Visit a barber or hair salon	
		Go to an uncrowded, indoor shopping center or museum	
		Attend a small, indoor gathering of fully vaccinated and unvaccinated people from multiple households	
Least Safe		Go to an indoor movie theater	
		Attend a full-capacity worship service	
		Sing in an indoor chorus	
		Eat at an indoor restaurant or bar	
		Participate in an indoor, high intensity exercise class	



Prevention measures not needed

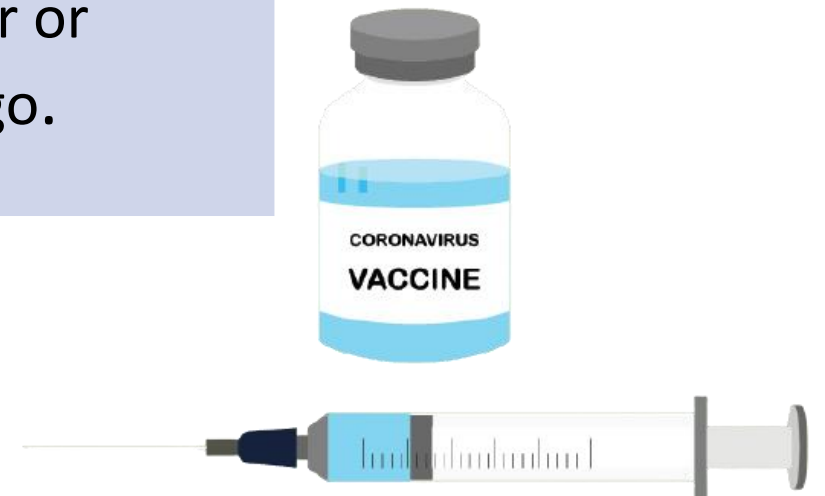


Take prevention measures

Wear a mask, stay 6 feet apart, and wash your hands.

Safest

Fully Vaccinated o	Unvaccinated/Not Fully Vaccinated
People who are 2 weeks past their single dose of the Johnson & Johnson vaccine or 2 weeks past the second shot of the Pfizer or Moderna Vaccine.	<ol style="list-style-type: none">1) Unvaccinated2) Received first dose of Pfizer or Moderna but not the second dose.3) Received first dose of Johnson & Johnson vaccine less than 2 weeks ago.4) Received second dose of Pfizer or Moderna less than two weeks ago.



Regardless of vaccination status

14-day quarantine for Individuals with I/DD is recommended in Group Homes

Group Homes

- If an Individual with I/DD is exposed to someone suspected or confirmed case of COVID-19, 14-day quarantine is recommended regardless of vaccination status.
- Test based strategy for shortening quarantine early is not recommended.

For DSP who are Exposed to Someone with Suspected or Confirmed COVID-19

Not fully Vaccinated

- Series of two viral tests for SARS-CoV-2 infection.
- Testing is recommended immediately and 5–7 days after exposure.
- DSP excluded from work for 14 days following exposure.

Fully Vaccinated and Symptomatic

- Series of two viral tests for SARS-CoV-2 infection.
- Testing is recommended immediately and 5–7 days after exposure.
- DSP excluded from work for 14 days following exposure.

Fully Vaccinated and Asymptomatic

- Exempt from testing.
- 14-day work restriction following exposure is not necessary.

When Not Fully Vaccinated Individuals with I/DD Leave the Group Home for Visitation

Group Home Individuals with I/DD not fully vaccinated who spend time in the hospital, or with family members in the community outside the Group Home

14-day quarantine recommended upon return to the Group Home

Quarantine entails:

- No participation in activities outside the home
- Stay in his/her room
- Social distance if leaving the room is necessary
- Wear a mask (if tolerated) when sharing a room with any person

When Vaccinated Individuals with I/DD Leave the Group Home for Visitation

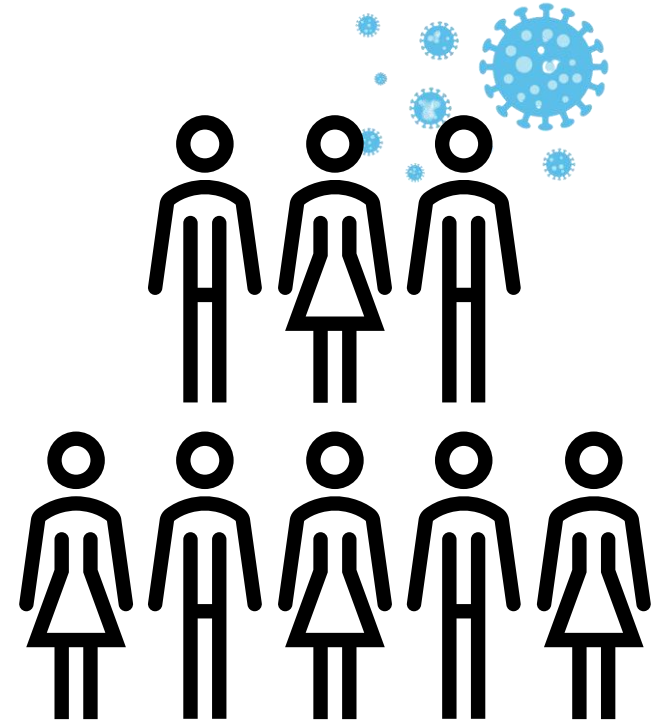
Group Home Individuals with I/DD who are fully vaccinated who spend time in the hospital, or dining with family members in the community outside the Group Home

14-day quarantine NOT recommended

When There Is An Outbreak in Your Group Home

People with I/DD Who We Support

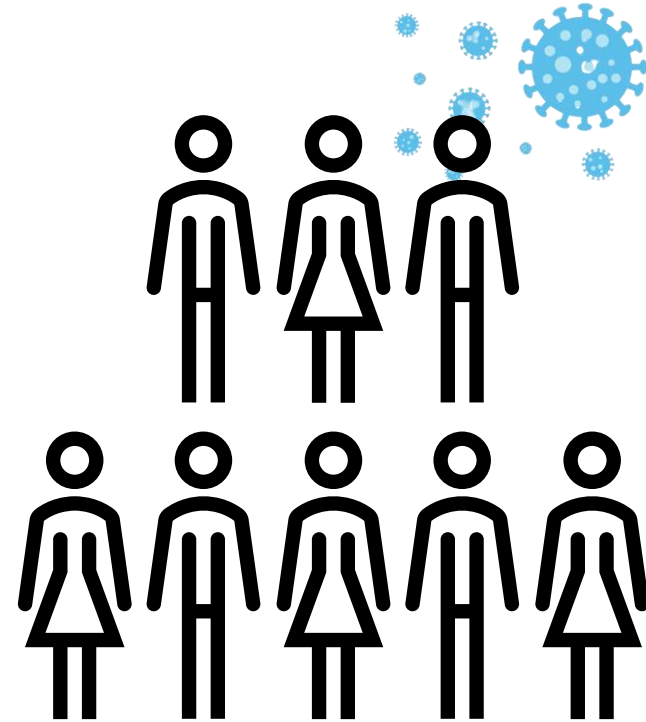
- Regardless of vaccination status, Individual with I/DD or DSP who tested positive required to isolate for 10-days or until symptoms resolve.
- All Individuals with I/DD should be tested.
- All Individuals with I/DD who live in the home 14-day quarantine.



When There Is An Outbreak

Direct Service Professionals

- All DSPs should be tested.
- DSPs who work in additional Group Home settings may be asked to stop working in those settings not experiencing an outbreak.
- DSP may be excluded from work in the event, leadership, or the DSP recognizes:
 - 1) DSP is not vaccinated.
 - 2) DSP was not wearing PPE properly.



Guidance: Visitors to the Group Home

- Visitation is not permitted during a COVID-19 outbreak.
- Outdoor visitation remains safer than indoor visitation
- Consider limiting visitors to one at a time; limit the number of visitors to a number where all distancing recommendations described can easily be followed.
- If simultaneous visits do occur, everyone in the designated area should wear face-coverings and physical distancing should be maintained regardless of vaccination status.

Guidance: Visitors to the Group Home

- Indoor visitation should only be permitted in a setting where the visitor can easily maintain least six feet from others in the facility.
- Before allowing indoor visitation, the risks associated with visitation should be explained to Individual with I/DD and their representatives and their visitors so they can make an informed decision about cooperating with guidance.

Guidance: Visitors to the Group Home

- Visitors should be screened prior to the visit regardless of vaccination status.
- Regardless of vaccination status, the following people should not visit:
 - Anyone who has COVID-19 and has not yet completed isolation, as recommended by CDC or the health department.
 - Anyone who has any symptoms of COVID-19.
 - Anyone who had close contact with a person with COVID-19 in the past 14 days.

Guidance: Visitors to the Group Home

- Hand hygiene should be performed by visitors and the person with IDD being visited before and after contact.
- Visitors should maintain a physical distance of 6 feet.
- Visits should take place in the following location order; outdoors, if possible, in common indoor areas; in single occupied rooms. Roommates should be elsewhere for visits.
- If the Individual with I/DD is fully vaccinated, they can have close contact (including touch) with their visitor.
- Individuals with I/DD who are not fully vaccinated should not have close contact with visitors and should maintain 6 feet.

Guidance: Visitation Between Vaccinated People

- Regardless of vaccination status, wear a well-fitting cloth mask, facemask or respirator.
- It is safest for everyone to maintain social distancing in the group home, but fully vaccinated people who we support can have close physical contact with their visitors even if they are unvaccinated.
- DDA indicated they are reviewing and will update the guidelines accordingly.

Guidance: Visitors to the Group Home

- Unvaccinated Individuals with I/DD could be restricted from receiving visitors in the future if:
 - COVID-19 test positivity for the community where your home is located rises above 10% **AND**
 - Fewer than 70% of the Individuals with I/DD in your Group Home are vaccinated

Individuals with I/DD may Leave the Group Home to Visit Family or Friends

- Testing is recommended immediately before or just after returning.
- Briefly quarantine until test result received.
- A rapid antigen test is OK.
- DDA will continue to review this recommendation (5/10/2021).



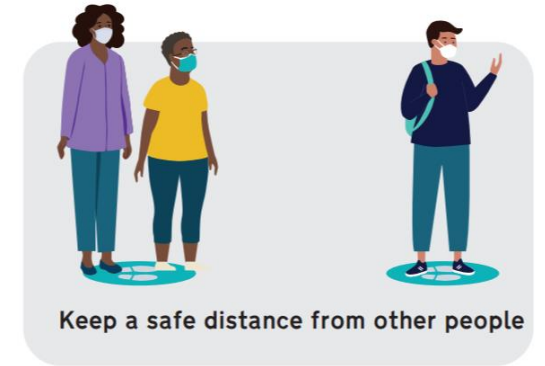
Group Home Mask & Social Distancing Recommendations for Individuals with I/DD While Outside the Group Home

Current Masking & Social Distancing guidance for Individuals with I/DD regardless of vaccination status

Maintain six feet of physical distance from anyone who is not a member of the household they are visiting.

Wear a face covering, if tolerated.

Avoid crowds, poorly ventilated spaces, and any setting whether other people are likely to not be wearing face coverings (e.g., restaurants).



Group Home Mask Recommendations for Individuals with I/DD in Group Homes with people who are NOT fully vaccinated

If they can safely do so, Individuals with I/DD should wear a mask or cloth face covering whenever within six feet of another DSP or other Individual with I/DD.

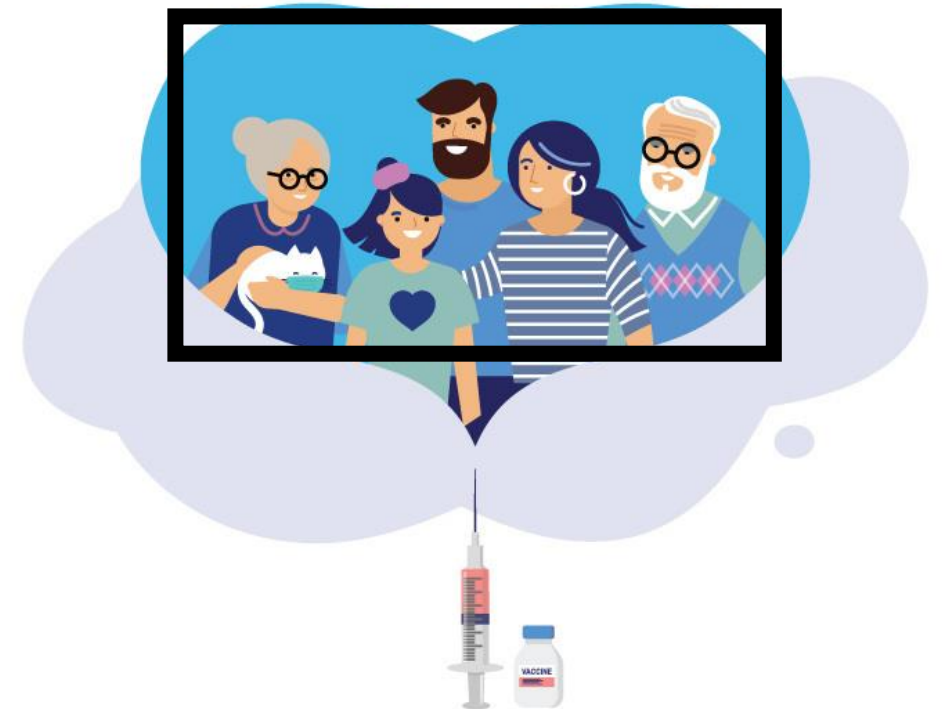


Unvaccinated

Group Home Mask Recommendations for Individuals with I/DD while the Group Home Where the Entire Group Home is Fully Vaccinated

Individuals with I/DD do not need to wear a cloth face covering or medical mask.

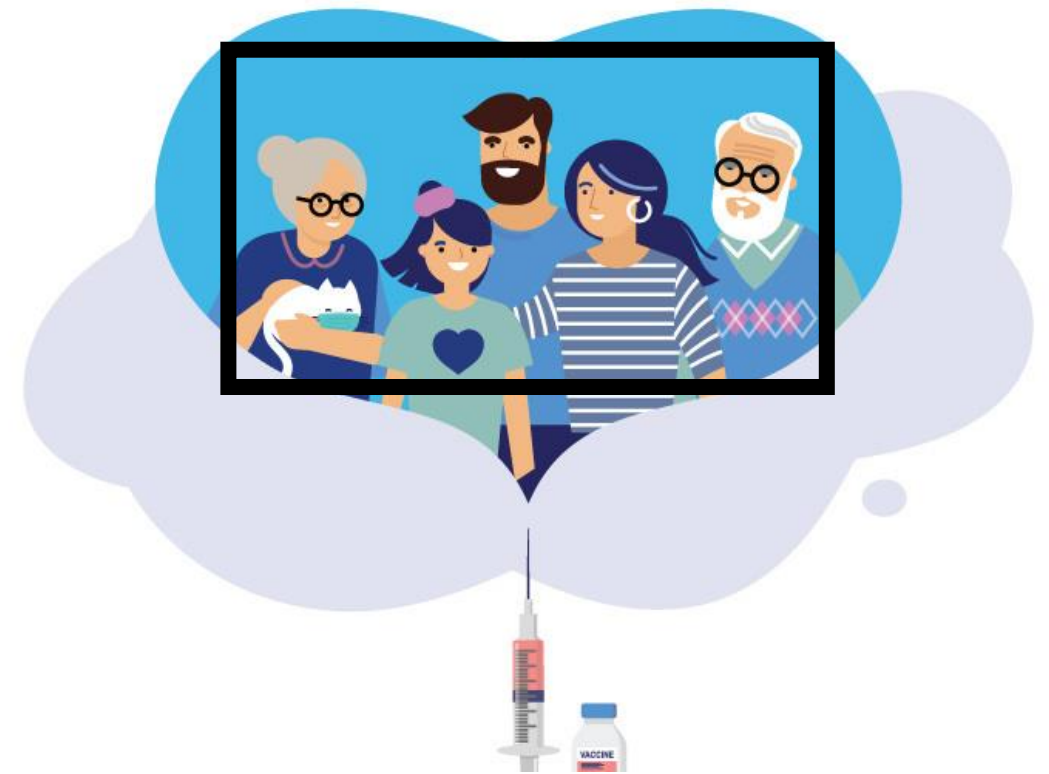
All Vaccinated



Group & Communal “Activities” for Individuals with I/DD are Permitted Inside and Outside the Group Home

If all Individuals participating in the activity are fully vaccinated, individuals with I/DD do not need to wear face coverings or practice distancing during group and communal activities.

All Vaccinated



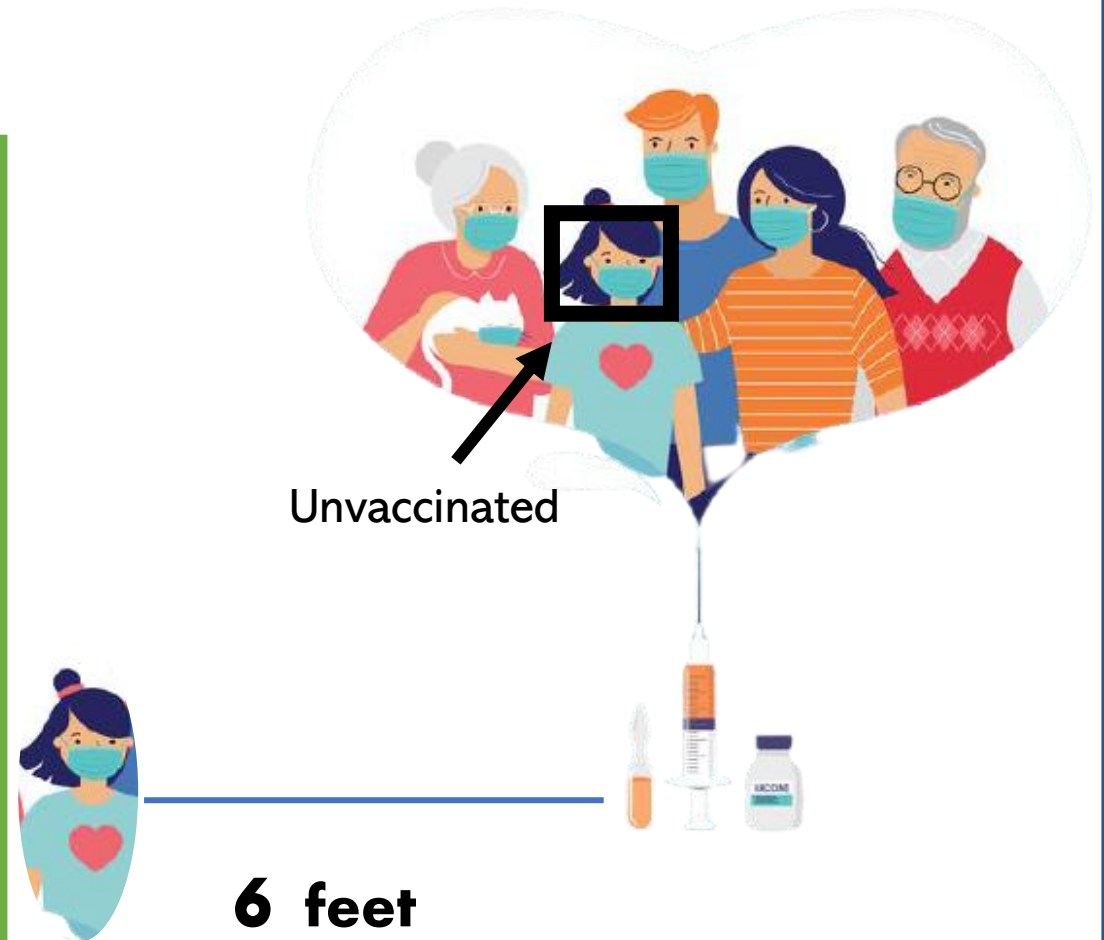
Group & Communal “Activities” for Individuals with I/DD are Permitted Inside and Outside the Group Home

If at least one Individual participating in the activity is not fully vaccinated,

Or there is a fully vaccinated immunocompromised Individual,

All individuals with I/DD, vaccinated and unvaccinated, who can safely wear face coverings should do so, AND

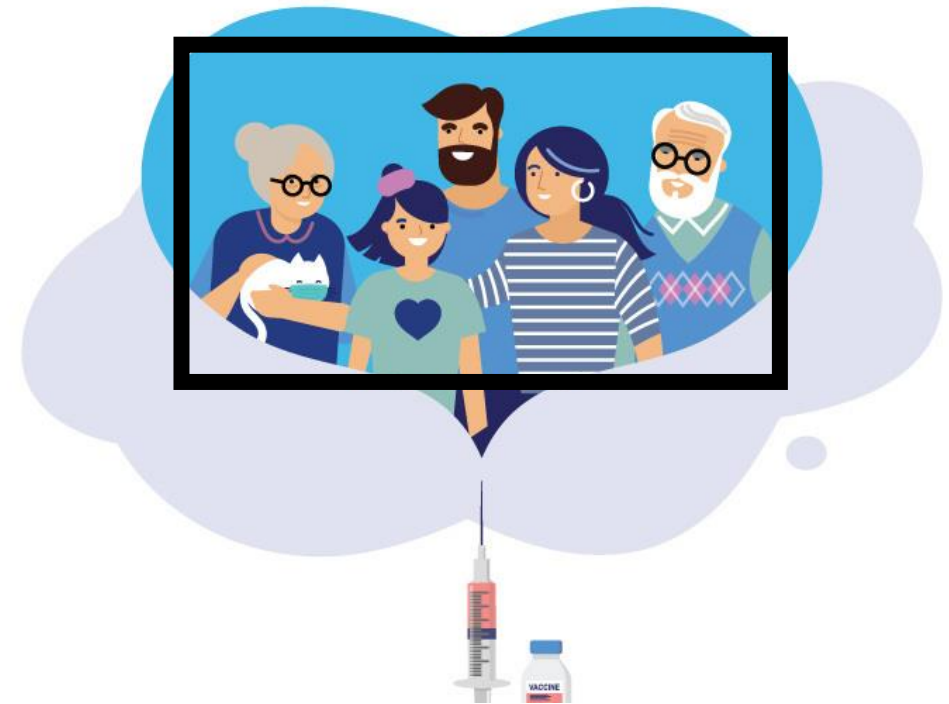
The unvaccinated individual with I/DD should maintain a physical distance of at least six feet from others.



Communal Dining for Individuals with I/DD is permitted inside the Group Home

If all Individuals participating in the activity are fully vaccinated, individuals with I/DD do not need to wear face coverings or practice distancing during meals.

All Vaccinated



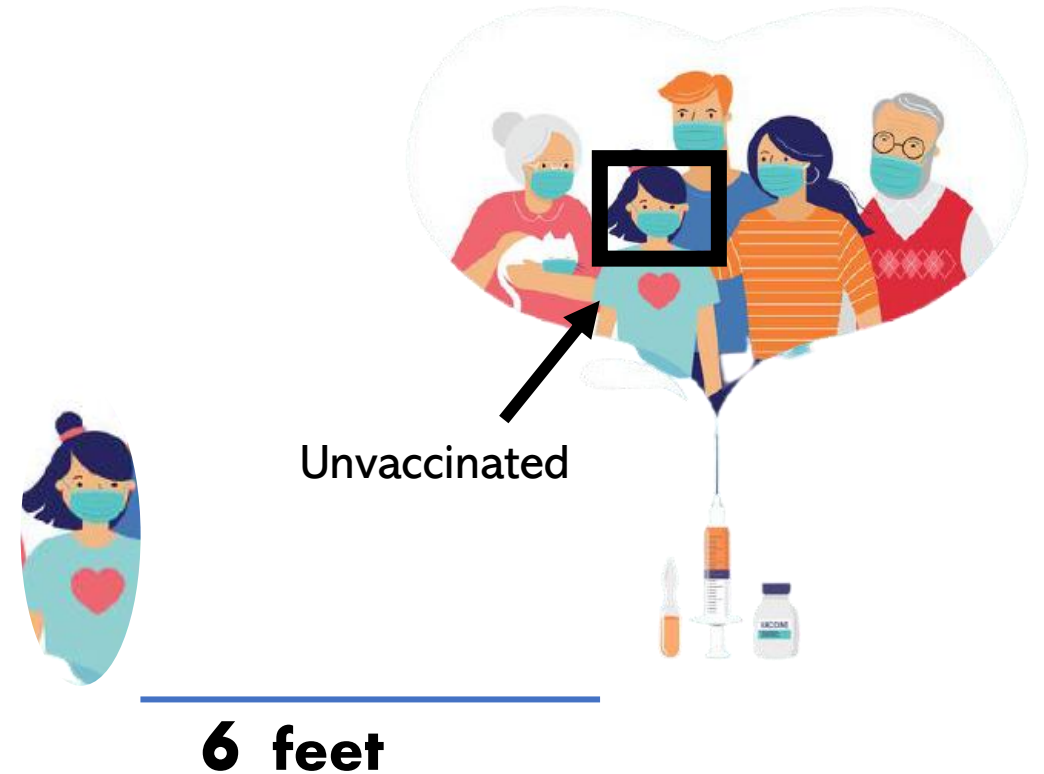
Communal Dining for Individuals with I/DD is Permitted Inside the Group Home

If at least one Individual participating in the dining is not fully vaccinated,

Or there is a fully vaccinated immunocompromised Individual,

All individuals with I/DD, vaccinated and unvaccinated, who can safely wear face coverings should do so, AND

The unvaccinated individual with I/DD should maintain a physical distance of at least six feet from others.



Regardless of Vaccination Status

Group Home PPE Recommendations for DSPs

Current PPE guidance for Direct Service Professionals remains the same regardless of vaccination status

N95 Respirator or well-fitting mask

Eye Protection (e.g., face shield, or goggles)

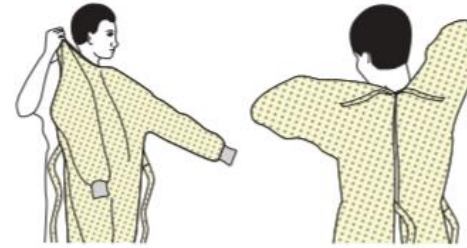
Gloves

Gown in the event splashes or sprays are expected to maintain level of care

Sequence for Donning Personal Protective Equipment (PPE)

1. GOWN

- Fully cover torso from neck to knees, arms to end of wrists, and wrap around the back
- Fasten in back of neck and waist



2. MASK OR RESPIRATOR

- Secure ties or elastic bands at middle of head and neck
- Fit flexible band to nose bridge
- Fit snug to face and below chin
- Fit-check respirator



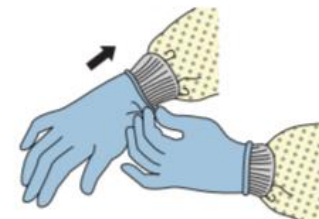
3. GOGGLES OR FACE SHIELD

- Place over face and eyes and adjust to fit



4. GLOVES

- Extend to cover wrist of isolation gown

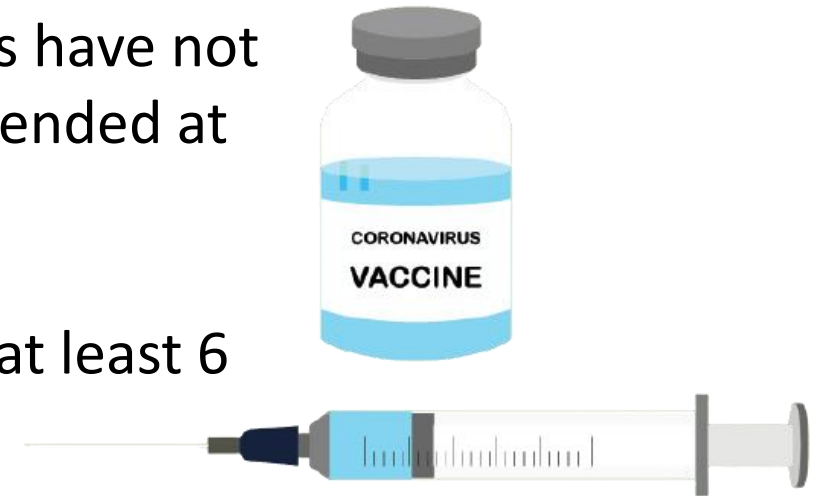


COVID-19 Testing Post-Vaccination

- During an outbreak even fully, vaccinated people should be tested.
- Fully vaccinated people do not have to participate in surveillance testing.
- DSPs should be tested if they are symptomatic, have a high-risk exposure, or are working in a setting where an outbreak has recently occurred.
- Use community positivity rates to determine when to discontinue surveillance testing.

Booster Shots

- An individual is considered fully vaccinated ≥ 2 weeks after a 2-dose mRNA COVID-19 vaccine series or ≥ 2 weeks after a single dose of Janssen COVID-19 Vaccine.
- The need for and timing of COVID-19 booster doses have not been established. No additional doses are recommended at this time.
- Pfizer and Moderna vaccines are 90% effective for at least 6 months after vaccination.
- Pfizer, Moderna and Johnson & Johnson -- are investigating the potential use of boosters.



Guidance: Domestic Travel

CORONAVIRUS DISEASE 2019 (COVID-19)

Domestic Travel RECOMMENDATIONS AND REQUIREMENTS	Not Vaccinated	Fully Vaccinated
Get tested 1-3 days before travel	✓	
Get tested 3-5 days after travel and self-quarantine for 7 days. Self-quarantine for 10 days if you don't get tested.	✓	
Self-monitor for symptoms	✓	✓
Wear a mask and take other precautions during travel	✓	✓



cdc.gov/coronavirus

Guidance: International Travel

CORONAVIRUS DISEASE 2019 (COVID-19)

International Travel RECOMMENDATIONS AND REQUIREMENTS	Not Vaccinated	Fully Vaccinated
Get tested 1-3 days before traveling out of the US	✓	
Mandatory test required before flying to US	✓	✓
Get tested 3-5 days after travel	✓	✓
Self-quarantine after travel for 7 days with a negative test or 10 days without test	✓	
Self-monitor for symptoms	✓	✓
Wear a mask and take other precautions during travel	✓	✓



cdc.gov/coronavirus

Guidance: Safe Travel Tips For Families With Unvaccinated Children

- Limit contact to people in your household.
- Avoid unvaccinated or not fully vaccinated people.
- Travel by car and make few stops.
- If you must fly, try to take a direct flight.



Guidance: Safe Travel Tips For Families With Unvaccinated Children

Less Safe

- Close contact with unvaccinated people who are not from your household.
- Longer trips by car or RV with many stops along the way.
- Trips by car or RV with people who are not vaccinated or not from your household.
- Flights with layovers.



Guidance: Safe Travel Tips For Families With Unvaccinated Children

Avoid

- Crowds
- Long-distance train or bus trips
- Traveling on a cruise ship or river boat

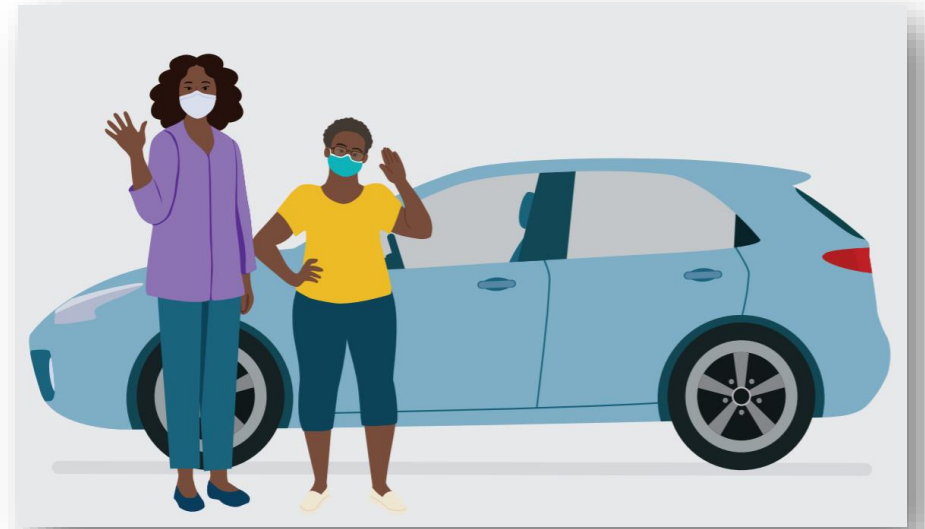


Guidance: Transportation In Personal Vehicles

- Limit the number of passengers in the vehicle.
- Improve the ventilation in the vehicle if possible .
 - Open the windows
 - Set the air ventilation/air conditioning on non-recirculation mode
- If using a rental car, ventilate during use, sanitize the door handles, steering wheel, and other surfaces before use.

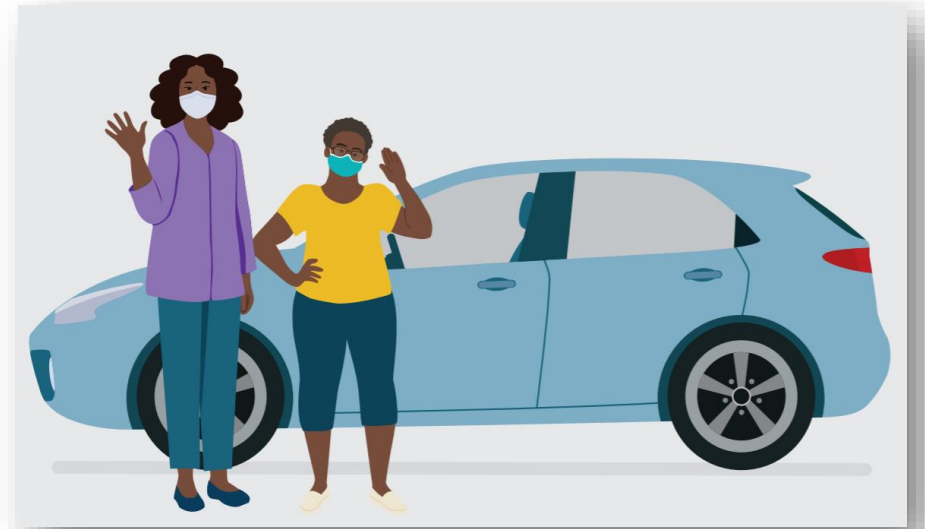
Guidance: Transportation Using Group Home Vehicle

- Those who can tolerate masks should wear them.
- Increase ventilation in vehicle e.g., cracking window open.
- Set A/C to non-recirculation.
- Social distance as much as possible.



Guidance: Transportation Using Group Home Vehicle

- Limit contact with driver if possible.
- Avoid touching services.
- After leaving the vehicle use hand sanitizer.
- When you arrive at your destination, wash your hands.



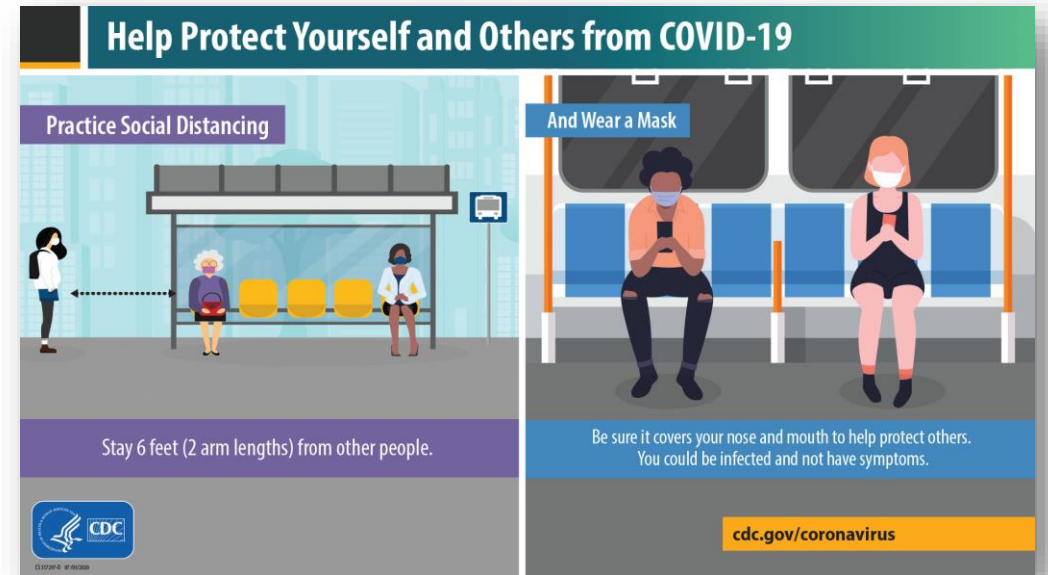
Guidance: Public Transport When Vaccinated and Unvaccinated

- Face coverings are required when traveling by public transportation.
- Face shields are not required.
- Local examples
 - County Ride On buses
 - Ride On extra, Flash
 - Metrobus
 - Metrorail
 - Taxis
 - On-demand car services
- All MCDOT buses have face coverings for those who do not have their own.
- At this time, the Federal requirement is scheduled to remain in effect through September 13th, 2021.



Guidance: Public Transport When Vaccinated and Unvaccinated

- Social distancing is strongly recommended.
- Riders are asked to socially distance.
- Bus interiors are being cleaned twice daily with hospital grade disinfectants.
- Bus air filters and ventilation systems are treated each night with disinfectants.





Q&A

