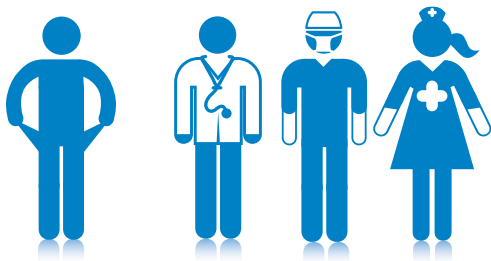


Project Access

Building Access to Specialty Care Through Community Partnerships

There are approximately **60,000** Montgomery County residents without access to health care.



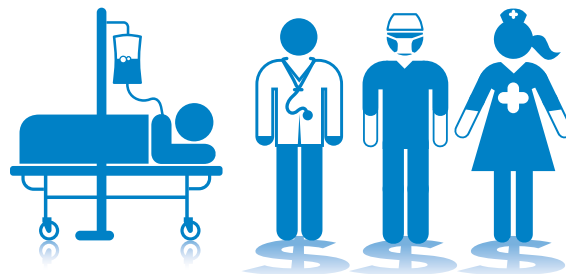
32,000 receive primary care through Montgomery Cares.

27% of them will require one or more specialty care visits.

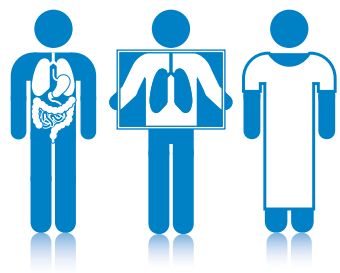
When they need specialized health care, they often encounter closed doors because they cannot pay for services.

Without appropriate care their health declines:

- They may not be able to work
- They may struggle to support their families
- They may become hospitalized, where they will receive acute care from specialists at a much higher cost



That's why **Project Access** is opening doors to specialty care for our community members.



IN FISCAL YEAR 2012:

100 specialty care providers

1,800 patients referred, and almost as many still need care

2,200 pro-bono appointments in: Cardiology, Dermatology, Gastroenterology, General Surgery, Orthopedics, Urology, and more

Donated hospital resources valued at **\$863,027**

Coordinated care including:

Diagnostic Testing, Medications and Primary Care Follow Up



Be a part of this coordinated network of health care specialists, hospitals, and diagnostic facilities providing specialty care to low-income, uninsured residents of our community.

A healthier Montgomery County starts with you!

OVER

Project Access, continued

For more information, or to volunteer your services, please contact:

Project Access Program Manager
(301) 628-3406
SpecialtyCare@PrimaryCareCoalition.org

Make a donation to support access to specialty care at PrimaryCareCoalition.org

Montgomery Cares Provider Network

Primary Care Clinics

- Care for Your Health
- CCACC-Pan Asian Volunteer Health Clinic
- Community Clinic, Inc.
- Community Ministries of Rockville
- Holy Cross Hospital Health Centers
- Mary's Center for Maternal and Child Care
- Mercy Health Clinic
- Mobile Medical Care, Inc.
- Muslim Community Center Medical Clinic
- Proyecto Salud
- Spanish Catholic Center
- The People's Community Wellness Center

Hospitals

- Holy Cross Hospital
- MedStar Montgomery Medical Center
- Shady Grove Adventist Hospital
- Suburban Hospital
- Washington Adventist Hospital